

Actions to Be Taken during an Earthquake

Earthquake! First, ensure personal safety.

When you feel a tremor, take cover under a desk or similar and prioritize your safety and that of your family.

Stay calm and attend to any fires.

In the event of a major earthquake, your priority should be to protect yourself.



Do not rush outside.

It is dangerous to run outside immediately. Check the situation carefully and act calmly.



Open the door and secure the exit.

Open doors to secure exits as doors may warp, trapping you indoors.

Act with correct information.

During a disaster, it is easy to be misled by rumors and misinformation.

Pay attention to information from the news media, local government offices, fire departments, and police departments.

Occurrence
of
an earthquake

First, ensure personal safety

- Get under a desk.
- Protect your head with a cushion, magazine, etc.
- Move away from furniture.
- Move away from glass surfaces.

If you feel a significant tremor or receive an earthquake early warning, prioritize protecting yourself and wait until the tremors subside.

Regularly check the safety inside your house. Also, ensure a residential fire alarm is installed.



2 min
to
5 min

The tremors subside

- Take care of fires in the kitchen, stoves, etc.
- When evacuating, turn off the breaker and the main gas valve.



5 min
to
10 min

Check and secure the personal safety of family members

- Confirm and secure the safety of your family members.
- Obtain disaster and evacuation information.
- Secure exits for evacuation.
- Beware of glass fragments and overturned furniture.



10 min
to
half a day

Neighborhood safety and mutual aid

- Rescue people trapped under collapsed houses and fallen furniture.
- Extinguish fires in the event of a fire.
- Rescue injured people.



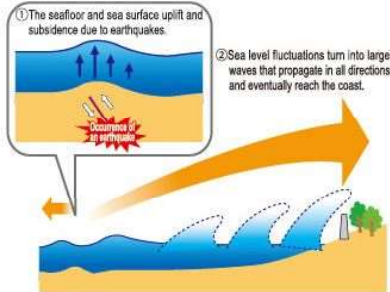
half a day
to
3 days

Be aware of aftershocks and secondary disasters

- For several days after the earthquake, avoid structures at risk of collapse, rivers, seas, cliffs, etc.
- Ensure you have daily necessities (emergency supplies) to sustain yourself for two to three days, as essential services like water, gas, electricity, telephone, and food supplies may be disrupted.

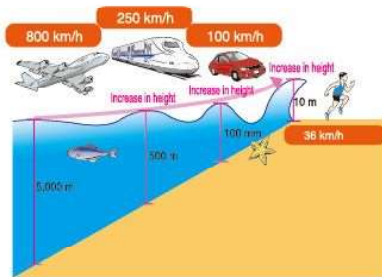
About Tsunami

Mechanism of Tsunami Generation



When a large earthquake occurs beneath the seafloor, the seafloor rises or sinks due to fault movement. This change causes the sea surface to fluctuate, creating large waves that are transmitted over a wide area in all directions, resulting in a tsunami.

Tsunami speed



The deeper the ocean, the faster a tsunami travels; offshore, it can travel at speeds comparable to that of a jet airplane.

Conversely, the shallower the water, the slower the speed. Therefore, as a tsunami approaches land, the waves that come later catch up with the preceding waves, increasing the wave height.

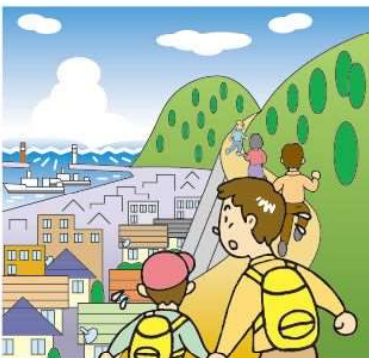
Pay attention to Tsunami Information



When an earthquake occurs, it is important to obtain tsunami information from television or radio.

If the arrival time of a tsunami coincides with high tide, the tsunami may reach higher than usual.

Evacuate to a Safe Place



If a tsunami warning is issued or you feel a strong tremor, evacuate from along the coast to higher ground as soon as possible.

Additionally, the second and third waves of a tsunami may be higher than the first wave.

Since tsunamis can strike repeatedly, remain vigilant until the warnings and advisories are lifted.

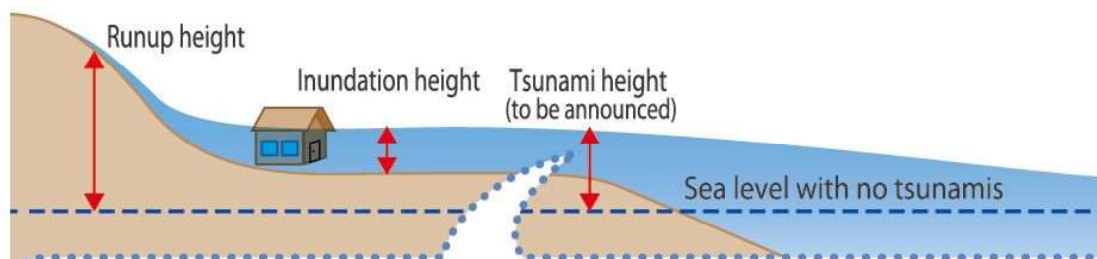
Types of Tsunami Warnings and Advisories

| Type | Announcement criteria | Announced tsunami height | | Possible damage and actions to take |
|-----------------------|---|--|--|---|
| | | Presented in numerical values (Classification of tsunami height prediction) | Announcement in case of a great earthquake | |
| Major tsunami warning | The expected height of the tsunami exceeds 3 meters at the highest point. | Over 10 m (10 m < Expected height) | Huge | Wooden houses are destroyed or swept away, and people are caught in the currents caused by the tsunami. Evacuate immediately from coastal regions and riverside areas to a safer place such as high ground or an evacuation building. |
| | | 10 m (5 m < Expected height ≤ 10 m) | | |
| | | 5 m (3 m < Expected height ≤ 5 m) | | |
| Tsunami warning | The expected height of the tsunami is greater than 1 m at the highest point and less than or equal to 3 m. | 3 m (1 m < Expected height ≤ 3 m) | High | In areas of lower elevation, tsunamis strike and cause inundation damage. People can be caught in the currents caused by the tsunamis. Evacuate immediately from coastal regions and riverside areas to a safer place such as high ground or an evacuation building. |
| Tsunami advisory | The expected tsunami height is more than 0.2 m at the highest point and less than or equal to 1 m, and there is a risk of tsunami disaster. | 1 m (0.2 m ≤ Expected height ≤ 1 m) | (Not indicated) | In the ocean, people can get caught in fast currents, aquaculture rafts may wash away, and small vessels can capsize. Get out of the water and leave coastal regions immediately. |

Tsunami Warnings and Advisories and Evacuation Points

- If the epicenter is close to land, tsunami warnings or advisories may not be issued in time before the tsunami hits. If you feel a strong or weak but long tremor, start evacuating immediately.
- If a “huge” tsunami warning is issued, indicating a potential tsunami similar to the one during the Great East Japan Earthquake, evacuate immediately to the safest possible location.
- Tsunami waves may be higher than expected locally due to coastal topography and other factors. Avoid complacency and aim for higher ground, even if you believe you are in a safe place.
- Tsunami waves can strike repeatedly over a long time. Keep evacuating until the tsunami warning/advisory is lifted.

About Tsunami



When an earthquake occurs and a tsunami threatens, a “tsunami advisory,” “tsunami warning,” or “major tsunami warning” is issued for each tsunami forecast area, depending on the expected tsunami height.

The announced tsunami height is the change from the sea level in the case of no tsunami near the coast and may be several times higher than this in some places.

Also, be careful during high tide and spring tide.

Etiquette at the Shelter

At the evacuation center, everyone who has evacuated has been affected by the disaster, and everyone is having a hard time. It is precisely at times like this that we should all be considerate and cooperate.

■ Concern for others



Show consideration for those around you and avoid doing anything to others that you wouldn't want done to yourself.

■ Helping each other



If you see someone in need, be proactive in helping them.

■ Follow the rules and roles



Observe the rules and roles established within the shelter.

■ Pet care and management



It is basic for pet owners to evacuate with their pets when a disaster occurs. However, they should follow the rules of the evacuation shelter so as not to cause inconvenience to other evacuees.

■ Attention to Persons Requiring Special Consideration



Be attentive to persons requiring special consideration, such as the elderly and the physically challenged.

■ Attention to hygiene



Keep the areas used by everyone clean and sanitized on a regular basis.

■ Do not be misled



Be calm and act based on accurate information, and do not be misled by rumors and falsehoods.

■ Prevention of infectious diseases



Thoroughly practice basic infection control measures such as hand washing and cough etiquette.

- Wear a mask. • Wash hands and gargle. • Keep distance between people.

Evacuation of Virus-infected People

If a virus-infected person is at home and needs to be evacuated, first contact the Public Health Center for assistance.

*The same applies to family members who are infected with the virus and are at home.

If you fall ill at the shelter, report it to the governing body immediately.

If you feel even the slightest bit unwell, immediately report it to the management organization and ask for instructions. If the virus spreads, it will cause inconvenience for the management organization and other evacuees. If the virus is transmitted to someone who is physically vulnerable, their condition could potentially become severe.

Support for Persons Requiring Special Consideration

Older adults and people with disabilities face many challenges, including the following, in the event of disasters.

◦ Difficulty in perceiving imminent danger ◦ Difficulty in taking immediate action to protect oneself

◦ Difficulty in asking for help or conveying what kind of assistance is needed



To protect persons requiring special consideration from disasters, both personal preparedness and support from the entire community are essential.

*Persons requiring special consideration refer to older people, people with disabilities, infants and young children, and other people who require special consideration in disaster prevention measures.

*In June 2013, the Disaster Countermeasure Basic Act was revised. According to this act, "persons requiring assistance in times of disaster" are now called "persons requiring special consideration." Of those persons requiring special consideration, those who have difficulty evacuating by themselves and need special assistance are called "persons requiring assistance for evacuation action."

Let's Protect Pets, too! Disaster Prevention Measures

Let's Protect Pets, too! Disaster Prevention Measures

From the Ministry of the Environment's (MOE) website



Infectious Disease Control (General Measures)

Countermeasures against Infectious Diseases MHLW

From the Ministry of Health, Labour and Welfare's (MHLW) Website



Protecting Persons Requiring Special Consideration from Disasters

To All Community Members:

- Maintain close communication with persons requiring special consideration**
Routinely greet and interact with persons requiring special consideration who live in the neighborhood. Also, ask them about their support needs while taking privacy and their wishes into consideration.
- Identify persons requiring special consideration**
Use the List of Persons Requiring Assistance for Evacuation Action as a reference to identify and share information on persons requiring special consideration.
- Inspect from the viewpoint of persons requiring special consideration**
Make sure that evacuation routes are wheelchair accessible, free of obstacles, etc., so that persons requiring special consideration can be safely guided to evacuate.
- Encourage participation in disaster drills**
Encourage persons requiring special consideration to participate in disaster drills. During these drills, establish a specific support system, including safety confirmation and evacuation guidance.

Installation Information on Automated External Defibrillator (AED)

An Automated External Defibrillator (AED) is a medical device used to deliver an electric shock to the heart if it has entered a state of ventricular fibrillation, losing its pumping function due to spasms, with the aim of restoring a normal rhythm. The general public can also use it.



| District name | Facility name | Address |
|---------------------------|--|---------------------------------|
| Wadomari School District | Wadomari Town Hall (In front of the Citizen Support Division) | 10 Wadomari, Wadomari-cho |
| | Wadomari Town Hall (Board of Education) | 10 Wadomari, Wadomari-cho |
| | Wadomari Elementary School | 920-1 Wadomari, Wadomari-cho |
| | Wadomari Kindergarten | 953-1 Wadomari, Wadomari-cho |
| | Wadomari Nursery School | 884 Wadomari, Wadomari-cho |
| | Yasuragi-kan (Wadomari Town Disaster Prevention Base Facility) | 727 Wadomari, Wadomari-cho |
| | Waji Community Center | 403-1 Wadomari, Wadomari-cho |
| | Wadomari Junior High School | 130 Tedechina, Wadomari-cho |
| | Okinoerabu Fishery Cooperative Association | 512-192 Tedechina, Wadomari-cho |
| | Tedechina Community Center (Erabu Nagahama Hall) | 483 Tedechina, Wadomari-cho |
| | Uetedechina Community Center (Wadomari Townhouse for Children and the Elderly) | 1022-2 Tedechina, Wadomari-cho |
| | Kibiru Community Center | 232-1 Kibiru, Wadomari-cho |
| | Degi Community Center | 799-1 Degi, Wadomari-cho |
| | Inobe Community Center | 1187-2 Inobe, Wadomari-cho |
| Kunigami School District | Azefu Community Center (Azefu Seikatsukan) | 316-3 Azefu, Wadomari-cho |
| | Kunigami Elementary School | 2904 Kunigami, Wadomari-cho |
| | Kunigami Nursery School | 2905 Kunigami, Wadomari-cho |
| | Fureaikan Gajumaru | 2959 Kunigami, Wadomari-cho |
| | Kunigami Community Center (Kunigami Training Hall) | 2969-1 Kunigami, Wadomari-cho |
| Ojiro School District | Nishibaru Community Center | 1091-1 Nishibaru, Wadomari-cho |
| | Ojiro Elementary School | 650 Ojiro, Wadomari-cho |
| | Ojiro Nursery School | 650-2 Ojiro, Wadomari-cho |
| | Ojiro Community Center (Ojiro Training Hall) | 358-2 Ojiro, Wadomari-cho |
| | Smile Pavilion Nyatou | 714-1 Tamajiro, Wadomari-cho |
| | Tamajiro Community Center | 1069-3 Tamajiro, Wadomari-cho |
| | Neori Community Center | 524-4 Neori, Wadomari-cho |
| | Minagawa Community Center | 568-1 Minagawa, Wadomari-cho |
| Uchijiro School District | Furusato Community Center | 329-1 Furusato, Wadomari-cho |
| | Shirogaoka Junior High School | 161 Uchijiro, Wadomari-cho |
| | Uchijiro Elementary School | 516-1 Uchijiro, Wadomari-cho |
| | Uchijiro Nursery School | 510 Uchijiro, Wadomari-cho |
| | Small-scale Multifunctional Home Gusuku | 529-1 Uchijiro, Wadomari-cho |
| | Sena Community Center (Sena Multifunctional Meeting Facility) | 1003 Sena, Wadomari-cho |
| | Nagamine Community Center | 587-1 Nagamine, Wadomari-cho |
| | Nishi Community Center (Nishi Life Improvement Center) | 255 Nishi, Wadomari-cho |
| Taniyama Community Center | 758 Taniyama, Wadomari-cho | |
| | Goran Community Center | 248 Goran, Wadomari-cho |

Evacuation Behavior



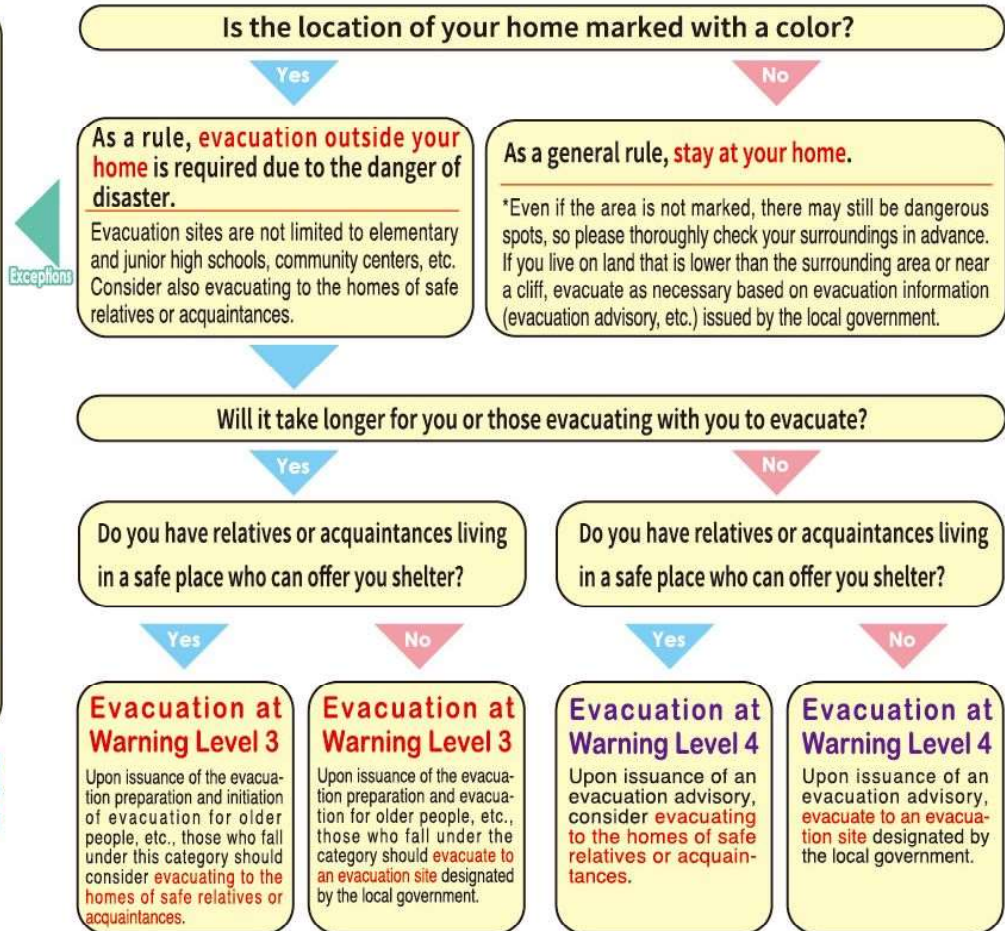
What Action Should You Take for Evacuation?

*Even if there is a risk of flooding, **staying at your home is possible** if the following three conditions are met.

- ① You are located outside the area where houses are at high risk of collapsing or falling due to flooding (i.e., assumed inundation area for house collapse, etc.; this area can be confirmed on the disaster prevention map).
- ② You are in an area higher than the expected depth of flooding.
- ③ You have enough water and food to last until the water recedes.

*Even if there is a risk of a landslide, **staying at your home** is possible if you live on the upper floors of a sufficiently robust condominium or other building.

*Evacuation means avoiding risks. People who are in a safe place do not need to go to an evacuation site.



Evacuation information, etc.

| Degree of risk | Warning level | Evacuation actions, etc. | Evacuation information, etc. | Originator |
|-----------------------------------|---|---|--|-----------------------------|
| ↑ High ↓ Low | Warning level 5 | You are already in a situation of disaster . Take the best action to save your life! | Disaster Information | Cities, towns, and villages |
| | Warning level 4 <small>Evacuation of all residents</small> | Take immediate actions to protect your life, such as promptly evacuating or taking shelter indoors! | Evacuation advisory Evacuation directive (Emergency) | |
| | Warning level 3 <small>Older people, etc., should evacuate</small> | Those who require more time to evacuate (e.g., older people, people with disabilities, and infants), along with their caregivers, should evacuate. Others should prepare for evacuation! | Evacuation preparation and evacuation for older people, etc. | |
| | Warning level 2 | In preparation for evacuation, confirm evacuation sites and routes and review your evacuation plan. | Advisory | Meteorological Agency |
| | Warning level 1 | Be aware of the latest weather information and be prepared for disasters. | Heavy rainfall is forecast in the next few days. | |

Disaster prevention weather information

Examples of information corresponding to warning levels

Information corresponding to warning level 5
E.g., Heavy rain emergency warning

Information corresponding to warning level 4
E.g., landslide disaster warning information

Information corresponding to warning level 3
E.g., heavy rain warning and flood warning

These are pieces of information to be used as references for residents to take voluntary evacuation actions. (Issued by the Japan Meteorological Agency and prefectures) Information corresponding to warning levels means that warnings, etc., are equivalent to corresponding levels issued by municipalities.

List of Shelters

In order to avoid panicking in case of an emergency, it is advisable to regularly check places where you can safely evacuate and take shelter during a disaster.

• Designated emergency evacuation site

| No. | District name | Evacuation site | Location | Phone | Capacity | Facility type | Target disaster | | | |
|-----|--------------------------|-------------------------------|----------------|-------|----------|---------------|-----------------|-----------|-------------|-------|
| | | | | | | | Earthquake | Landslide | Storm surge | Flood |
| 1 | Wadamari | Kasaishi Beach Park | 545-1 Kibiru | | 1,000 | Park | ○ | ○ | ○ | ○ |
| 2 | School District | Yashichi Park | 714-1 Wadamari | | 3,757 | Sports Square | ○ | ○ | ○ | ○ |
| 3 | Kunigami | Kunigami Elementary School | 2904 Kunigami | | 3,253 | School ground | ○ | ○ | ○ | ○ |
| 4 | School District | Nishibaru Sports Park | 1071 Nishibaru | | 826 | Sports Square | ○ | ○ | ○ | ○ |
| 5 | Ojiro School District | Furusato Sports Park | 352 Furusato | | 1,749 | Sports Square | ○ | ○ | ○ | ○ |
| 6 | Uchijiro School District | Townpeople's Sports Park | 237 Uchijiro | | 14,984 | Sports Square | ○ | ○ | ○ | ○ |
| 7 | | Shirogaoka Junior High School | 161 Uchijiro | | 2,732 | Square | ○ | ○ | ○ | ○ |
| 8 | | Uchijiro Elementary School | 516-1 Uchijiro | | 5,236 | School ground | ○ | ○ | ○ | ○ |
| 9 | | Ashikibu Park | 602-2 Taniyama | | 2,272 | Park | ○ | ○ | ○ | ○ |
| 10 | | Sena Sports Park | 1002 Sena | | 865 | Sports Square | ○ | ○ | ○ | ○ |
| 11 | | Nagamine Sports Park | 602 Nagamine | | 1,498 | Sports Square | ○ | ○ | ○ | ○ |
| 12 | | Magohachi Park | 363-1 Goran | | 1,628 | Park | ○ | ○ | ○ | ○ |

• Designated evacuation shelters

| No. | District name | Evacuation site | Location | Phone | Capacity (max.) | Facility type | Target disaster | | | | |
|-----|-------------------------------|-----------------------------|----------------------------|-----------------|-----------------|---------------------------|---------------------------|-----------|-------------|-------|---|
| | | | | | | | Earthquake | Landslide | Storm surge | Flood | |
| 13 | Wadamari School District | Wadamari Elementary School | 920-1 Wadamari | 92-0004 | 495 (825) | Gymnasium/School building | ○ | ○ | ○ | ○ | |
| 14 | | Wadamari Junior High School | 130 Tedechina | 92-0030 | 496 (827) | Gymnasium/School building | ○ | ○ | ○ | ○ | |
| 15 | | Yasuragi-kan | 727 Wadamari | | 300 (501) | Reinforced concrete | ○ | ○ | ○ | ○ | |
| 16 | | Erabu Nagahama Hall | 483-1 Tedechina | | 211 (353) | Reinforced concrete | ○ | ○ | ○ | ○ | |
| 17 | | Waji Community Center | 403-1 Wa | | 58 (97) | Reinforced concrete | ○ | ○ | ○ | ○ | |
| 18 | | Kibiru Community Center | 232-1 Kibiru | | 89 (149) | Reinforced concrete | ○ | ○ | ○ | ○ | |
| 19 | | Utedechina Community Center | 1022-2 Tedechina | | 72 (120) | Reinforced concrete | ○ | ○ | ○ | ○ | |
| 20 | | Degi Community Center | 799-1 Degi | | 146 (244) | Reinforced concrete | ○ | ○ | ○ | ○ | |
| 21 | | Inobe Community Center | 1187-2 Inobe | | 30 (50) | Reinforced concrete | ○ | ○ | ○ | ○ | |
| 22 | | Azefu Community Center | 316-3 Azefu | | 59 (99) | Reinforced concrete | ○ | ○ | ○ | ○ | |
| 23 | | Kunigami School District | Kunigami Elementary School | 2904 Kunigami | 92-0301 | 145 (243) | Gymnasium/School building | ○ | ○ | ○ | ○ |
| 24 | | | Kunigami Community Center | 2969-1 Kunigami | | 102 (171) | Reinforced concrete | ○ | ○ | ○ | ○ |
| 25 | Nishibaru Community Center | | 1091-1 Nishibaru | | 57 (95) | Reinforced concrete | ○ | ○ | ○ | ○ | |
| 26 | Ojiro School District | Ojiro Elementary School | 650-1 Ojiro | 92-0075 | 145 (243) | Gymnasium/School building | ○ | ○ | ○ | ○ | |
| 27 | | Training Center | 1307-2 Neori | 92-0805 | 537 (895) | Reinforced concrete | ○ | ○ | ○ | ○ | |
| 28 | | Ojiro Community Center | 358-2 Ojiro | | 75 (125) | Reinforced concrete | ○ | ○ | ○ | ○ | |
| 29 | | Tamajiro Community Center | 1069-3 Tamajiro | | 69 (116) | Reinforced concrete | ○ | ○ | ○ | ○ | |
| 30 | | Neori Community Center | 524-4 Neori | | 66 (110) | Reinforced concrete | ○ | ○ | ○ | ○ | |
| 31 | | Minagawa Community Center | 568-1 Minagawa | | 39 (65) | Reinforced concrete | ○ | ○ | ○ | ○ | |
| 32 | | Furusato Community Center | 329 Furusato | | 39 (66) | Reinforced concrete | ○ | ○ | ○ | ○ | |
| 33 | | Uchijiro School District | Uchijiro Elementary School | 516-1 Uchijiro | 92-0076 | 145 (243) | Gymnasium/School building | ○ | ○ | ○ | ○ |
| 34 | Shirogaoka Junior High School | | 161 Uchijiro | 92-0302 | 179 (299) | Gymnasium/School building | ○ | ○ | ○ | ○ | |
| 35 | Uchijiro Community Center | | 531 Uchijiro | | 58 (97) | Reinforced concrete | ○ | ○ | ○ | ○ | |
| 36 | Sena Community Center | | 1003 Sena | | 38 (64) | Reinforced concrete | ○ | ○ | ○ | ○ | |
| 37 | Nagamine Community Center | | 587-1 Nagamine | | 22 (66) | Reinforced concrete | ○ | ○ | ○ | ○ | |
| 38 | Nishi Community Center | | 255 Nishi | | 34 (58) | Reinforced concrete | ○ | ○ | ○ | ○ | |
| 39 | Taniyama Community Center | | 758 Taniyama | | 39 (66) | Reinforced concrete | ○ | ○ | ○ | ○ | |
| 40 | Goran Community Center | | 248 Goran | | 39 (66) | Reinforced concrete | ○ | ○ | ○ | ○ | |

• Welfare shelters

| No. | Shelter | Location | Capacity (max.) | Remarks |
|-----|-------------------------------------|---------------|-----------------|---------|
| 41 | Wadamari Town Social Welfare Center | 39-3 Wadamari | 259 (432) | |

Disaster Information

List of Contacts

| Organization name | Location | Phone | Remarks |
|---|------------------------------------|--------------|---|
| Wadamari Town Hall | 10 Wadamari, Wadamari-cho | 0997-92-1111 | |
| Kagoshima Local Meteorological Observatory | 4-1 Higashikorimoto-cho, Kagoshima | 099-250-9919 | Operations Section, Disaster Prevention Division |
| Naze Weather Station | 8-1 Nazeminato-machi, Amami | 0997-52-0375 | Technical Section |
| Amami Coast Guard Office | 22-1 Nazeirifune-cho, Amami | 0997-52-5811 | Guard and Rescue Department |
| Fire Station | 1319 Amata, Chita-cho | 0997-93-0119 | |
| Okinoerabu Police Station | 120 Wadamari, Wadamari-cho | 0997-92-0110 | |
| Kunigami Residential Police Box | 2998 Kunigami, Wadamari-cho | 0997-92-2675 | Security Division |
| ASDF 55th Aircraft Control and Warning Squadron | 1222-17 Sumiyoshi, China-cho | 0997-93-2169 | |
| Kyushu Electric Power Okinoerabu Branch Office | 389-3 China, China-cho | 0120-986-808 | |
| JA Amami Wadamari Branch Office | 578-1 Wadamari, Wadamari-cho | 0997-92-1221 | |
| Okinoerabu Island Fisheries Cooperative | 512-192 Tedechina, Wadamari-cho | 0997-92-3427 | |
| Wadamari Town Chamber of Commerce and Industry | 1225 Wadamari, Wadamari-cho | 0997-92-0148 | |

Disaster Emergency Message Dial 171

When a disaster strikes, it can be challenging to confirm the safety of your family members and acquaintances due to telecommunications line congestion.

To solve this problem, NTT provides the Disaster Emergency Message Dial (171) service.



[Call charges apply when recording and playing back messages.]

The start of the service, the phone numbers that can be registered (telephone numbers in the affected areas), and other operational methods and conditions of the service will be set by NTT, depending on the situation. The details will be announced via TV, radio, the Internet, and other means.

Disaster Message Boards for Cell Phones and Smartphones

*Contact cell phone carriers for information in the case of using smartphones.

Access the Disaster Message Board from the official menu or dedicated application.

When you register a message:

Register

Select "Register" and enter your message.

When checking messages:

Confirm

Select "Confirm," enter the cell phone number of the person in the affected area and read the message.

To Know the Rainfall Information of Wadamari Town

- Amami district** Dial **099-214-7085**.
Press "0" for the representative point and "1" for each city, town, or village.
- Type** Press "1" (Rainfall by municipality)
Select the area.
Press "1" for the northern part of the main island, "2" for the southern part of the main island and Kikai, "3" for Tokunoshima, and "4" for Okinoerabu and Yoron.
- Area** Press "4" (Okinoerabu/Yoron)
Select your municipality.
Press "1" for Wadamari Town, "2" for China, and "3" for Yoron Town.
- Cities, towns, and villages** Press "1" (Wadamari Town).



Kagoshima River Erosion Control Information System

Information on precipitation, sediment hazard indicators, water levels of major rivers, and tidal levels is provided.

PC <http://www3.doboku-bousai.pref.kagoshima.jp/>

Smartphone site <http://www3.doboku-bousai.pref.kagoshima.jp/smart/>

Mobile site <http://www3.doboku-bousai.pref.kagoshima.jp/mobile/>

Information regarding the River Information System and the Landslide Disaster Prediction Information System can also be found on the Kagoshima Mobile Prefectural Government website.

To directly enter the address from the Internet on your cell phone, use the following URLs.

<http://www.doboku-bousai.pref.kagoshima.jp/mobile/>

or <http://www1.doboku-bousai.pref.kagoshima.jp/mobile/>



Smartphones
QR code



Mobile site
QR code



Kagoshima Mobile Prefectural Government
Top Page QR Code

Dedicated Dial for Individual Response on Power Outage Information

 **0 1 2 0 - 4 2 6 - 3 0 6**

Assumed Tsunami Inundation Areas

The Kagoshima Prefecture website depicts the maximum assumed inundation area in the event of an earthquake expected to bring a tsunami of the largest class to the prefecture's coastline.

PC <http://www.pref.kagoshima.jp/ah07/bosai/sonae/sonae/tsunami.html>

Assumed tsunami inundation areas around Wadamari Town are numbered 203-207 on the map.

Disaster Prevention Measures at Home

Discuss Disaster Prevention



Every September 9 is **Wadamari Town Disaster Prevention Day**.

Wadamari suffered severe damage from Typhoon No. 9 (Typhoon Babe, known in Japan as Okinoerabu Typhoon), which hit the town on September 9, 1977. From the lessons learned from this disaster, Wadamari Town designated September 9 of every year as Wadamari Town Disaster Prevention Day for the purpose of preventing damage caused by disasters. In order to protect the lives and property of Wadamari Town residents from disasters, relevant organizations collaborate closely to ensure that disaster response measures by voluntary disaster prevention organizations are executed promptly and effectively, aiming to establish a robust disaster prevention system.



Disasters can strike at any time.

It is essential to be prepared on a daily basis to minimize damage. Hold regular family disaster prevention meetings to discuss ways to protect you and your family from disasters.



Division of roles for each family member

Determine both your role in daily disaster prevention and your role in the event of a disaster.



Check for hazardous areas in the house

Inspect both the inside and outside of the house and identify potential hazards.



Ensure a safe space in the house.

Consider safe rearrangement of furniture and methods to prevent it from tipping over or falling.



Check and replace emergency items

Check that you have all the necessary items. Do not forget to replace them with new ones.



Confirming communication methods and evacuation sites during a disaster

Confirm communication methods and evacuation sites in case family members become separated. If possible, use a holiday or other time to make a preliminary inspection of the area together.

[Family and Related Contact Information] First, fill out the table below.

| Name | Contact | Remarks |
|------|---------|---------|
| () | — | |
| () | — | |
| () | — | |
| () | — | |

Evacuation/Meeting place